



**CONFLUENCE**  
2023 TNASLA CONFERENCE

4.20.23 - 4.21.23  
HALLORAN CENTRE  
MEMPHIS, TN



**ASLA**  
TENNESSEE

# LETTER FROM THE PRESIDENT-ELECT

Welcome to Memphis and the 2023 TNASLA Conference! We are thrilled to host the conference this year in West Tennessee. I would like to thank all attendees for taking the time to be with us to learn about the state of our profession in Tennessee and beyond. I would also like to thank our sponsors, many of whom we see at TNASLA events year after year, who are a critical part of our Chapter's success. We have an eclectic mix of local and out-of-state practitioners and professionals with backgrounds in public service, academia, private practice, and philanthropic organizations joining us as presenters this year. This diverse collection of experience is an illustration of the broad range of our work as landscape architects. We appreciate all of you making room in your schedule to share your ideas and knowledge with us.

I bet most of you reading this would agree that what drew you to our profession was the different project types or sites you might find yourself working on. While this variety makes for a profession that is rarely boring (as landscape architects we can find ways to make a parking lot design fun if need be), it also makes it one that is difficult to define. Specifically, we face challenges when addressing licensure issues and defending our profession. However, we are at an exciting point when public sentiment and concern with quality outdoor spaces is booming. Over the past few years there has been increasing demand for and support of quality parks, plazas, streetscapes, greenways, and other places we design every day that are safe, comfortable, and accessible to all. We see it here in Memphis and I am sure that you see it in your communities. With more eyes on outdoor spaces, standards for the quality of their design, functionality, programming, and response to the needs of the communities they serve are rising.

The general public's perception of landscapes is shifting from just pretty places to multi-purpose systems that provide both aesthetic and functional benefits. Those parking lots mentioned above not only store cars, but when given the space to open up our toolkit, can store and treat stormwater and house native plants that attract pollinators and cool the asphalt below them. Our understanding of nature-based solutions as a functional tool is making its way into legislative discussions. For instance, as a direct result of ASLA's Advocacy Day efforts, the *Excess Urban Heat Mitigation Act* was introduced into the Senate late last year. This bill is proposed to fund green infrastructure and nature-based tools like increased tree planting and maintenance, green roof systems, and other elements that are right in our wheelhouse.

So, while we gather here in Downtown Memphis, near the *confluence* of the Wolf River and the Mississippi River to enjoy the *confluence* of ideas between peers and allied professionals, let's enjoy this time and celebrate the *confluence* of the public's demand for a better and more sustainable built environment with our ability and training to deliver exactly that.



Cameron Yates, ASLA, PLA  
TNASLA President-Elect

# PLANNING COMMITTEE MEMBERS

Thank you to all of the Planning Committee Members who generously donated their time and effort to help make this year's conference a success:

*Joni Bailey*

*Christine Donhardt*

*Scott Henninger*

*Sam Henry*

*Isobel Ritch*

*Erin Tharp*

*Lissa Thompson*

*Chet Winstead*

*Michelle Ye*

# 2023 TNASLA ANNUAL CONFERENCE

**April 20, 2023 Thursday**

**1:30 - 4:00 PM: *Memphis Riverfont Transformation Tour\****

*Carlisle Cutbank Bluff, Tom Lee Park, and the Cobblestone Landing*

George Abbot, Mississippi River Parks Partnership

William Tietje, RLA, SCAPE Landscape Architecture

Ritchie Smith, ASLA, PLA, Ritchie Smith Associates

Mike Lemm, City of Memphis Building Design & Construction

\*See following pages for tour starting point and other details

**5:00 - 5:30 PM: Conference Registration, Lobby**

**5:00 - 6:00 PM: Welcome Reception and Sponsor Expo, Lobby and Lounge**

**6:00 - 6:30 PM: Dinner, Reception Hall**

**6:00 - 6:55 PM: Keynote, Reception Hall, *Connecting Communities: the Hyde Family Foundation's Investment in Memphis's Parks, Trails, and Public Spaces***

Lauren Taylor, Vice President Programs and Learning, Hyde Family Foundation

**7:00 - 8:00 PM: Awards Presentation, Reception Hall**

**Sponsored by:**



**8:15 - 10:00 PM: After Party, Silly Goose, 100 Peabody Place Suite 190**

**Sponsored by:**



**April 21, 2023 Friday**

**7:30 - 8:00 AM: Conference Registration, Lobby**

**8:00 - 8:15 AM: Welcome Remarks, Cameron Yates, ASLA, PLA, TNASLA President-Elect, Reception Hall**

**8:20 - 9:15 AM: Breakfast, Keynote, Reception Hall, *The Future of Downtown Memphis: A Look into the Projects and Initiatives that are Driving Downtown Forward!***

Paul Young, President and CEO, Downtown Memphis Commission

**Sponsored by:**



*Unless otherwise noted, all events will be at the Halloran Centre*

**9:20 - 10:15 AM: Session 1, Theatre, *A Comprehensive Plan to Protect, Preserve, and Improve Overton Park***

Conners Ladner, PLA, Design Workshop

Tina Sullivan, Executive Director, Overton Park Conservancy

**Sponsored by:**



**10:15 - 11:00 AM: Break with Expo Sponsors, Lobby and Lounge; TNASLA Executive Committee Meeting, Theatre Green Room**

**11:00 - 11:55 AM: Session 2, Theatre, *Big Plans for a Big Park on the Big River***

Lissa Thompson, ASLA, LEED AP, PLA, Ritchie Smith Associates

Mary Haizlip, AIA, Haizlip Studio Architects

Findley Frazer, PE, Frazer Environmental Consulting

**Sponsored by:**



**12:00 - 12:55 PM: Lunch, Keynote, Reception Hall, *Tom Lee Park: Re-envisioning Life on the River***

William Tietje, RLA, Senior Associate, SCAPE Landscape Architecture

**12:55 - 1:55 PM: Break with Expo Sponsors, Lobby and Lounge**

**2:00 - 2:55 PM: Session 3, Theatre, *Community as Practice: Empathy, Engagement, and Action***

Dr. C.L. Bohannon, ASLA, Associate Dean, Justice, Equity, Diversity, and Inclusion and Associate Professor, Landscape Architecture, University of Virginia School of Architecture

**3:00 - 3:55 PM: Session 4, Theatre, *Memphis Botanic Garden's 'Rooted at Park and Cherry' and the Role of Garden Tourism***

Sam Henry, ASLA, PLA, TRPA, Principal, DT design studio

Mike Allen, Executive Director, Memphis Botanic Garden

Daniel Grose, Director of Horticulture, Memphis Botanic Garden

**4:00 - 4:55 PM: Session 5, Theatre, *ASLA Climate Action Plan: A Vision for 2040***

Adrian Smith, FASLA, PLA, Staten Island Capital Projects Team Leader, NYC Parks

**5:00 - 5:30 PM: Expo Sponsor Giveaway Drawing, Closing Remarks, Theatre**

# THURSDAY SITE TOUR

1:30 - 4:00 PM: *Memphis Riverfont Transformation Tour*

## *Carlisle Cutbank Bluff, Tom Lee Park, and The Cobblestone Landing Restoration*

*Carlisle Cutbank Bluff, Tom Lee Park, and The Cobblestone Landing Restoration*

**Directions:** Head west along the pedestrian corridor next to the Hyatt Caption at Front Street and MLK Avenue. Continue past Fancy's Fish House to the adjacent trolley stop and head south on the River Bluff Walkway about a block and a half to the first tour stop - the Carlisle Cutbank Bluff.

**Tour Route:** The Carlisle Cutbank Bluff offers expansive views of the riverfront (*top right*). It features a new ADA-compliant switchback trail, lined with stone seats and surrounded by masses of planting, that descends the steep bluff to provide access to the riverfront.

From here, cross Riverside Drive below to the Beale Street Landing Visitor Center to see the transformed 30-acre Tom Lee Park on the banks of the Mississippi River (*middle right*). Learn about the vision and purpose behind park plans as well as details of design and construction of the park characterized by sculpted landforms, extensive planting, and unique structural features.

Walk north from Tom Lee Park to the adjacent historic Cobblestone Landing (*bottom right*), the nation's largest extant at 7.5 acres. Learn about the Cobblestones' role in history and designing in the face of ever-changing river dynamics and overarching historic preservation guidelines. Hear about permitting and reviews as well as design approaches and special materials selected to provide stabilization and accessibility. Finish the tour at the new overlook plaza on Riverside Drive at Union Avenue.

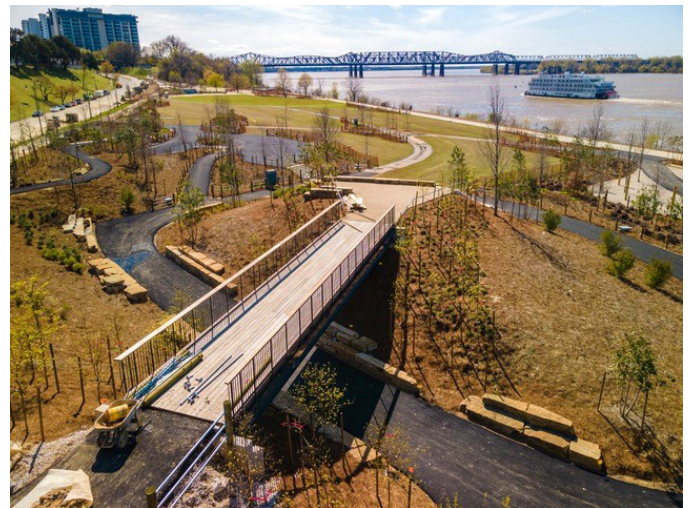
### **Tour Leaders:**

*William Tietje, RLA, Senior Associate, SCAPE Landscape Architecture*

*George Abbott, Director of External Affairs, Mississippi River Parks Partnership*

*Ritchie Smith, ASLA, PLA, Principal, Ritchie Smith Associates*

*Mike Lemm, Project Manager, City of Memphis Building Design & Construction*



# THURSDAY RECEPTION, AWARDS, AND AFTER PARTY

## 5:00 - 6:00 PM: Welcome Reception

Please join us at the Halloran Centre during the Welcome Reception to kick off the 2023 TNASLA Conference. The reception will be held in the Gerber Taylor Capital Advisors Lobby and the Anne and Pat Halloran Centre Lounge. This is a great opportunity to visit with our 30+ exhibiting sponsors, fellow landscape architects, and other conference guests. Drinks will be served during this social hour.

Following the Welcome Reception, a buffet dinner will be held in the Halloran Centre's Reception Hall. The Keynote Presentation description is below:


## 6:00 - 7:00 PM: Dinner Keynote, *Connecting Communities: The Hyde Family Foundation's Investment in Memphis's Parks, Trails, and Public Spaces*

For more than 15 years, the Hyde Family Foundation has invested its financial and human capital to advance a connected system of parks, trails, bike lanes, and other public spaces in Memphis to improve citizens' health and wellness, connect people from diverse communities, and protect and improve the natural environment, among other benefits. Lauren Taylor, Vice President for Programs and Learning, will share how the Foundation's grant funding has supported the incredible work of public and private partners including the City of Memphis and Shelby County, Memphis River Parks Partnership, Overton Park Conservancy, Shelby Farms Park Conservancy, and the Wolf River Conservancy. Taylor will highlight how trustees and staff have gone beyond the grant dollars to help make Memphians' bold vision a reality and how that commitment continues into the future.

**Speaker:** *Lauren Taylor, Vice President Programs and Learning, Hyde Family Foundation*

## 7:00 - 8:00 PM: Awards Presentation

After dinner and the keynote presentation, the TNASLA Professional, Student, and Olmsted Awards will be presented. Please see the Awards section of this program to see all recipients and learn more about the work being done in our state to protect and enhance both our natural and built environment.

**Sponsored by:**  Recreational Concepts

## 8:15 - 10:00 PM: After Party

After the Awards Presentation, an after party will be held at Silly Goose (100 Peabody Place, Suite 190) - a quick walk from the Halloran Centre.

**Sponsored by:**  Firefly RECREATION, LLC



# FRIDAY EDUCATION SESSIONS

7:30 - 8:00 AM: **Conference Registration**

8:00 - 8:15 AM: **Welcome Remarks**

*Cameron Yates, ASLA, PLA, TNASLA President-Elect*

8:20 - 9:15 AM: **Breakfast Keynote, *The Future of Downtown Memphis: A Look into the Projects and Initiatives that are Driving Downtown Forward!***



**Speaker:**

*Paul Young, President and CEO, Downtown Memphis Commission*

**Sponsored by:**





# FRIDAY EDUCATION SESSIONS

## 9:20 - 10:15 AM: **Session 1, A Comprehensive Plan to Protect, Preserve, and Improve Overton Park**

Overton Park welcomes more than one million guests each year, connecting community with nature and open space programming in a centrally located, historic park. Visitors to the park reflect the rich diversity of Memphis and are its greatest asset. The Overton Park Comprehensive Plan recognizes the need to maintain the park's historic features while enhancing the park's existing conditions to provide an improved experience for its visitors. The plan emphasizes the importance of sustainability, integrating green spaces and ecological restoration into the park's design, which aligns with its mission of preservation and conservation, starting with the historic old growth forest.



### **Speakers:**

*Conners Ladner, PLA, Principal, Design Workshop*

*Tina Sullivan, Executive Director, Overton Park Conservancy*

### **Sponsored by:**



## 10:15 - 11:00 AM: **Break with Expo Sponsors, TNASLA Executive Committee Meeting**

Please visit the Gerber Taylor Capital Advisors Lobby and take time to chat with our sponsors. Thanks to their support, TNASLA is able to put on events such as this conference, and many local events. Their support also helps us defend licensure and track other issues critical to our profession year-round. As you make your way around the expo area, keep an eye out for sponsors participating in the giveaway drawing, which will be held at the end of the day.

During this break, there will be a TNASLA Executive Committee meeting in the Halloran Centre Theatre and Stage's green room. If you are interested in joining the Executive Committee or volunteering for TNASLA in any capacity, please feel free to speak with any of our Executive Committee members (who are listed here: [www.tnasla.org](http://www.tnasla.org)) or reach out to our Executive Director, Erin Tharp, at [tnasla@att.net](mailto:tnasla@att.net).

# FRIDAY EDUCATION SESSIONS

11:00 - 11:55 AM: **Session 2, Big Plans for a Big Park on the Big River**

The 1,500-acre Big River Park site is located opposite downtown Memphis along the west bank of the Mississippi River in Arkansas, at the end of the Big River Crossing. It is being planned as a natural area with minimal development, primarily to consist of forest, fields, and wetlands, but also pedestrian and bicycle trails, boardwalks, an open-air visitor center, outdoor classroom, and restroom facilities. Among goals to be accommodated are habitat protection, reforestation, and environmental education. A space for retriever training, sponsored by Purina, is also being incorporated. The low-lying site having minimal topographic change presents unique design challenges with the varying extent and level of annual flood waters. Elevated railroads crisscrossing the site along with adjacent interstate embankments pose constraints on layout and circulation. The park is owned and will be managed by a private conservancy. Master planning for the park has involved cooperation from conservation agencies from the states of Arkansas, Tennessee, and Mississippi, as well as the Corps of Engineers, and a special partnership with Ducks Unlimited.



## Speakers:

*Lissa Thompson, ASLA, LEED AP, PLA, Ritchie Smith Associates*

*Mary Haizlip, AIA, Haizlip Studio Architects*

*Findley Frazer, PE, Frazer Environmental Consulting*

## Sponsored by:



# FRIDAY EDUCATION SESSIONS

## 12:00 - 12:55 PM: Lunch Keynote, Tom Lee Park: Re-envisioning Life on the River

The transformation of Tom Lee Park is designed to respond to the dynamic ecosystems of the Mississippi River. Three large open lawns define four zones of activity and amenities: the Civic Gateway, Active Core, Community Batture, and Habitat Terraces. While each has its own character, they are unified by an overarching plan that imitates the hydrology of the adjacent river.

This session will overview the evolution of the park's design - from early concept to realization and implementation.

### Speaker:

*William Tietje, RLA, Senior Associate, SCAPE Landscape Architecture*



## 12:55 - 1:55 PM: Break with Expo Sponsors

Please take this time to continue visiting with expo sponsors and learn about the latest and greatest new products and services from industry leaders.

## 2:00 - 2:55 PM: Session 3, Community as Practice: Empathy, Engagement, and Action

Dr. Bohannon's presentation focuses on community engagement as a leaderful practice to extend the place-based learning ethos of Landscape Architecture beyond the discipline. Drawing on previous scholarship examining the intersection between community engagement and engaged scholarship, this work assesses the shared values of place-based education, empathy, and action within Landscape Architecture.

### Speaker:

*Dr. C.L. Bohannon, Associate Dean for Justice, Equity, Diversity & Inclusion and Associate Professor in Landscape Architecture, School of Architecture at the University of Virginia*



# FRIDAY EDUCATION SESSIONS

## 3:00 - 3:55 PM: **Session 4, Memphis Botanic Garden's 'Rooted at Park and Cherry' and the Role of Garden Tourism**

The Memphis Botanic Garden (MBG) serves over 200,000 visitors each year, and is the only public botanic garden within a 200 mile radius of the Memphis metro area. However, it is an ongoing challenge for cultural institutions to compete for the public's time, attention, and financial support. In an effort to become more energetic and inventive in serving visitors, the MBG engaged in multiple campaigns to enhance the visitor experience, improve the educational value of exhibits, increase access, and take advantage of the growing Garden Tourism industry.



### Speakers:

*Sam Henry, ASLA, PLA, TRPA, Principal, DT design studio*

*Mike Allen, Executive Director, Memphis Botanic Garden*

*Daniel Grose, Director of Horticulture, Memphis Botanic Garden*

## 4:00 - 4:55 PM: **Session 5, ASLA Climate Action Plan: A Vision for 2040**

ASLA is taking a significant step forward with its first Climate Action Plan. The ambitious plan seeks to transform the practice of landscape architecture by 2040 through actions taken by ASLA and its members focused on climate mitigation and adaptation, ecological restoration, biodiversity, equity, and economic development. The Climate Action Field Guide for ASLA Members sets out steps landscape architects can take today to address the climate and biodiversity crises. Please join us for this session to learn about the creation of the Plan and implementation strategies.



### Speaker:

*Adrian Smith, FASLA, PLA, Staten Island Capital Projects Team Leader, NYC Parks*

## 5:00 - 5:30 PM: **Expo Sponsor Giveaway Drawing, Closing Remarks**

Please stick around for the giveaway drawing to be held during this time. If you dropped off a business card or otherwise entered your name at a participating sponsor's booth, you might head home with a prize!

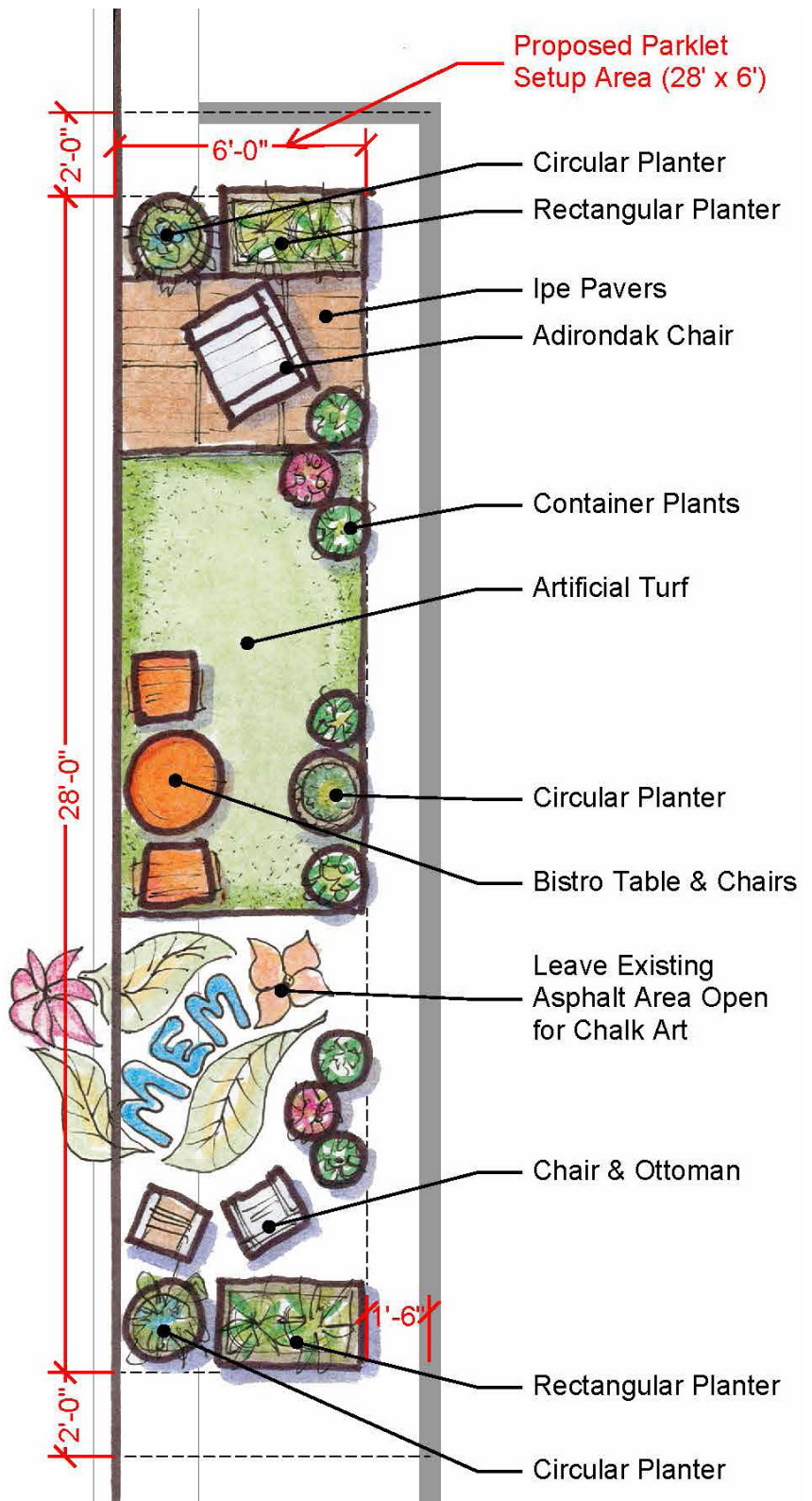
# FRIDAY PARKLET

**8:00 AM - 5:00 PM: Parklet Installation, in Partnership with the Downtown Memphis Commission (DMC)**

TNASLA will be setting up a temporary parklet within the on-street parking spaces along South Main Street, outside of the Halloran Centre. The goal of the parklet is to help spread the word about our profession during World Landscape Architecture Month. We will have some printed materials from ASLA available, but as many of you know, it's always more effective for people to talk to a landscape architect. So, TNASLA is working with the DMC to help activate the space to encourage public engagement and discussions about our profession.

During the event, local artist Toonky Berry will be creating a beautiful nature-themed chalk art display in the parklet, and we'll have art, games, and QR codes for visitors to easily order nearby takeout.

Thanks to SiteOne, Recreational Concepts, Wausau Tile, and Landscape Forms for generously providing materials to help us build our park for the day!



# SPEAKER AND TOUR LEADER BIOGRAPHIES



***George Abbott, Director of External Affairs, Memphis River Parks Partnership***

George Abbott leads marketing and communications, development, community engagement and programs for Memphis River Parks Partnership, the nonprofit leading the \$61 million transformation of Tom Lee Park on the Memphis Riverfront. Previously, George served as Program Director (Cities) at the Knight Foundation. He launched and led the Knight Cities Challenge and served as program director in three communities; Macon, San Jose and St. Paul. Abbott also led communications at ArtPlace America. George is an author with published works including “The Economics Book: Big Ideas, Simply Explained”. Abbott holds a bachelor’s degree from Newcastle University in the UK.



***William Tietje, RLA, Senior Associate, SCAPE Landscape Architecture***

William Tietje is overseeing the construction of Tom Lee Park for SCAPE, the landscape architecture firm that collaborated with Studio Gang on the park’s design. His appreciation for landscape architecture is rooted in his upbringing on a rural farm in Southwest Louisiana. Upon graduating from Louisiana State University with a Bachelor’s in Landscape Architecture, William spent several years working at Michael Van Valkenburgh’s office in Brooklyn, NY. Will has gained experience more recently working on various projects across the Southeast and the New Orleans area and

is driven by building and engineering landscape systems through detailed design and earthworks. William’s aesthetic is influenced by the simple elegance of rural farming practices and his appreciation of the urban context.



***Ritchie Smith, ASLA, PLA, Principal, Ritchie Smith Associates***

J. Ritchie Smith, ASLA is principal with Ritchie Smith Associates (RSA) a landscape architecture, urban design and planning firm based in Memphis. In his over 40 years of managing the firm he has directed numerous award-winning projects including the Shelby Farms Greenline, Memphis International Airport & Ground Transportation Center Pedestrian Plaza, and Big River Crossing. He earned his BSLA from the University of Virginia and MLA from the Harvard Graduate School of Design. RSA prepared the master plan for the Cobblestone Landing Restoration and Improvements and served as design lead in collaboration with Tetra Tech Engineers on final design and construction administration. Ritchie is RSA’s project manager for the Cobblestones project.

# SPEAKER AND TOUR LEADER BIOGRAPHIES



***Mike Lemm, Project Manager, City of Memphis Building Design & Construction***

Mike Lemm is a project manager in the City of Memphis Building Design and Construction Office. In that capacity he has overseen projects ranging from new facility construction (\$26.5M Leftwich Tennis Center) to major maintenance improvements (\$525K Lichterman Nature Center). Mike earned his BLA at Louisiana State University. He subsequently worked in private practice in Texas, South Carolina, and later as an Associate with the SWA Group in Sausalito, California before returning to Memphis.

Before working at BD&C, Mike was a landscape architect with Memphis Parks. Mike has managed the Cobblestone Landing Restoration for the City since the construction documents phase of the project.



***Lauren Taylor, Vice President Programs and Learning, Hyde Family Foundation***

Among her roles at the Hyde Family Foundation, Lauren oversees the Vibrant Spaces and Communities and Civic Pride impact areas as well as the Grants Management and Learning/Evaluation Team. She developed the Livable Communities Programs to focus on Memphis-based initiatives furthering a strong urban core; connecting people via a network of green assets, streetscapes, and transit opportunities; and creating thriving neighborhoods. Lauren previously served as the Foundation's Program Officer for Greening Initiatives. She also serves on the Board of the City Parks Alliance.



***Paul Young, President and CEO, Downtown Memphis Commission***

Paul Young currently serves as the President and CEO of the Downtown Memphis Commission (DMC), the organization tasked with economic and community development in the Central Business Improvement District. In this role, he leads the work to create a thriving and vital downtown district that benefits the entire region. Before joining the DMC, Paul served as Director of the City of Memphis Division of Housing and Community Development (HCD). He previously served as Administrator for the Memphis and Shelby County Office of Sustainability which is charged with implementing a strategic framework for action on green initiatives in the City and County. Paul holds a BS in Electrical Engineering from UT Knoxville, and a Master of City and Regional Planning and a Master of Science in Business Administration from the University of Memphis.

and a Master of City and Regional Planning and a Master of Science in Business Administration from the University of Memphis.

# SPEAKER AND TOUR LEADER BIOGRAPHIES



*Conners Ladner, PLA, Principal, Design Workshop*

Conners Ladner is a professional Landscape Architect with Design Workshop in Austin, Texas. Conners is an honors graduate in landscape architecture from Louisiana State University, where he was selected as the student commencement speaker for the College of Art and Design graduation ceremony.

Conners believes that our community's health and happiness are greatly strengthened by spending time in the natural world. His objective with design is to create outdoor spaces that are comfortable, attractive, reflective, and fun. Through research, analysis, iteration, and innovation, he strives to formulate a creative design response to parallel the inherent beauty of nature in urban environments.



*Tina Sullivan, Executive Director, Overton Park Conservancy*

Tina Sullivan is the executive director of Overton Park Conservancy, which stewards historic Overton Park. The Conservancy's vision is to cultivate a beautiful, safe, and welcoming park for every Memphian. Drawing on her background in communications, conservation, and nonprofit management, Ms. Sullivan seeks to intentionally nurture a sense of community in which individuals from diverse backgrounds find a shared joy, belonging, and connection through their collective experiences in Overton Park. Having just marked her tenth year in this role, Ms. Sullivan is now focused on

completing a comprehensive plan to guide the park's future, including the launch of nature-based programming in the Old Forest State Natural Area.



*Lissa Thompson, ASLA, LEED AP, PLA, Ritchie Smith Associates*

Lissa Thompson has helped build a landscape architecture, urban design and planning practice recognized for design excellence and commitment to public landscapes, community revitalization, and land stewardship. At RSA she is a lead designer and has managed complex planning projects including the Memphis Park System Master Plan, Salvation Army Ray and Joan Kroc Community Center (LEED Silver), and Shelby County HUD Resilience Grant and Implementation Projects. Lissa is a principal landscape architect for the multi-disciplinary team preparing the Big River Park Master Plan for which RSA is the lead. Lissa has been a full-time visiting instructor in landscape architecture at the U of A School of Architecture. She earned her MLA from the Harvard Graduate School of Design.



# SPEAKER AND TOUR LEADER BIOGRAPHIES



***Mary Haizlip, AIA, Principal and Managing Partner, Haizlip Studio Architects***

Mary Haizlip, AIA is the Principal and Managing Partner of Haizlip Studio. Graduating with a degree in Engineering from the University of Memphis, Mary has parlayed her interests and considerable talents in math, science, and design into an expertise for art direction of complex architecture and exhibit design projects. She is currently serving on the Board of Directors for the UrbanArt Commission and the University of Memphis National Alumni Association. In 2022 Mary and her business partner and husband, Reb Haizlip, FAIA, received the Distinguished Alumni Award from the U of M. Mary and her team at Haizlip Studio are currently working with RSA on the Big River Park Master Plan and the new UT Martin TEST Hub facility.



***Findley Frazer, PE, Owner and Managing Member, Frazer Environmental Consulting***

Findley provides private engineering consulting services ranging from ecological studies and regulatory compliance to project development and construction administration services with an emphasis on public parks and greenways. Findley is currently in charge of the development and construction of the Wolf River Greenway for the Wolf River Conservancy. For the Big River Park Master Plan, he is contributing his expertise toward wetland restoration and reforestation as well as insights for permitting and project development as needed. Findley earned a BE in civil engineering from Vanderbilt and is a registered professional engineer in AL, MS, TN & AR.



***Dr. C.L. Bohannon, Associate Dean for Justice, Equity, Diversity & Inclusion and Associate Professor in Landscape Architecture, School of Architecture at the University of Virginia***

Dr. Bohannon's research focuses on the relationship between community engagement and design education, primarily through design for social and environmental justice. He works in the contexts of community history and identity, social/environmental (in)justice, and community learning. CL teaches courses on community-engaged design research, and seeing, understanding & representing landscapes.

Originally from West Memphis, AR, CL earned his BLA from the University of Arkansas. Prior to joining UVA in 2022, he was an Associate Professor at Virginia Tech. In 2019, he served as President of the Virginia Chapter of ASLA.

# SPEAKER AND TOUR LEADER BIOGRAPHIES



***Sam Henry, ASLA, PLA, TRPA, Principal, DT design studio***

A principal at DT design studio, Sam has worked in the field of landscape architecture since 1998, after receiving his BLA from Mississippi State University. His work experience has encompassed a variety of project types including site planning, site design, recreational master planning, park design, greenways, and construction plans. In practice, Sam has been instrumental in organizing a focus on sustainable design and educating clients on its economic, environmental, and social benefits.

With a focus on enlivening the public realm and creating spaces that encourage community, Sam is involved with projects from the conceptual design phase through final construction plans and is currently performing construction observation for several large-scale projects in the Southeast.



***Mike Allen, Executive Director, Memphis Botanic Garden***

Upon completion of a 25-year career with one of America's leading multi-national corporations and after the successful conception, launch, operation and ultimate sale of his own business, Mike Allen entered a 3rd phase of his career – non-profit management. In late 2010 he joined Catholic Charities of West Tennessee as its President / CEO, staying until December 31, 2016. On January 1, 2017, he began his new role as Executive Director of the Memphis Botanic Garden.

Mike offers a unique combination of corporate, entrepreneurial, and non-profit leadership experiences and a strong network of local corporate, community, philanthropic, and non-profit relationships.



***Daniel Grose, Director of Horticulture, Memphis Botanic Garden***

A native Memphian, Daniel began his career in the horticultural industry working for a gardening service in Los Angeles fresh out of college. After a four-year stint in California, Daniel returned to Memphis and started his own landscaping company, Set Apart Landscaping. After several years of working on commercial projects, he decided to re-brand as Daniel Grose Garden Design. In this new iteration of his own design and installation business, Daniel began to further his work exploring and implementing ecologically minded landscapes inspired by nature. This work has carried over to his role at the Memphis Botanic Garden, where he has served as the Director of Horticulture since 2022.

## SPEAKER AND TOUR LEADER BIOGRAPHIES



*Adrian Smith, FASLA, PLA, Staten Island Capital Projects Team Leader, NYC Parks*

Adrian Smith, FASLA has lived and worked in NYC for over 30 years. After graduating from Penn State, he developed his creative and technical skills working for several private firms and for both the city and state of New York. He created landscapes and gardens for college campuses, museums, and private residential clients in the US, and for housing developments, resort towns, and college campuses in Egypt, Libya and Oman. Currently at NYC Parks, he leads a team of over 20 landscape professionals who design and build the parks and playgrounds on Staten Island, including Freshkills Park and the resiliency measures along the island's south shore.

Adrian is now serving as ASLA's VP for Professional Practice where his focus has been to promote the work that landscape architects do to help solve the issues being caused by our changing climate. His 35 years of volunteer service reflect his core belief in the power of landscape architecture to transform communities for the better.

Growing up on a dairy farm, he experienced the visceral connection we humans have to the land. At university he learned the importance of a strong professional network. As ASLA NY's president and two-term trustee, he employed these ideas to help build a vibrant community of landscape architects in NYC. He also realized that despite society's dependence on the work of landscape architects, they rarely garner the recognition they deserve. He has worked to change that through his abiding commitment to his professional community, which has resulted in expanded educational offerings and outreach, changes in policy, and protection for designed landscapes. His contributions have also enhanced the understanding of landscape architecture for new audiences, through volunteer projects that engage everyone from school children to lawmakers.



# PROFESSIONAL AWARDS Residential Design - Merit Award

**Rosglen** Knoxville, TN  
*Hedstrom Landscape Architecture*



The circular family lawn is a functional artform, its geometry and clipped grass forming a pleasing contrast to the lush surrounding meadow

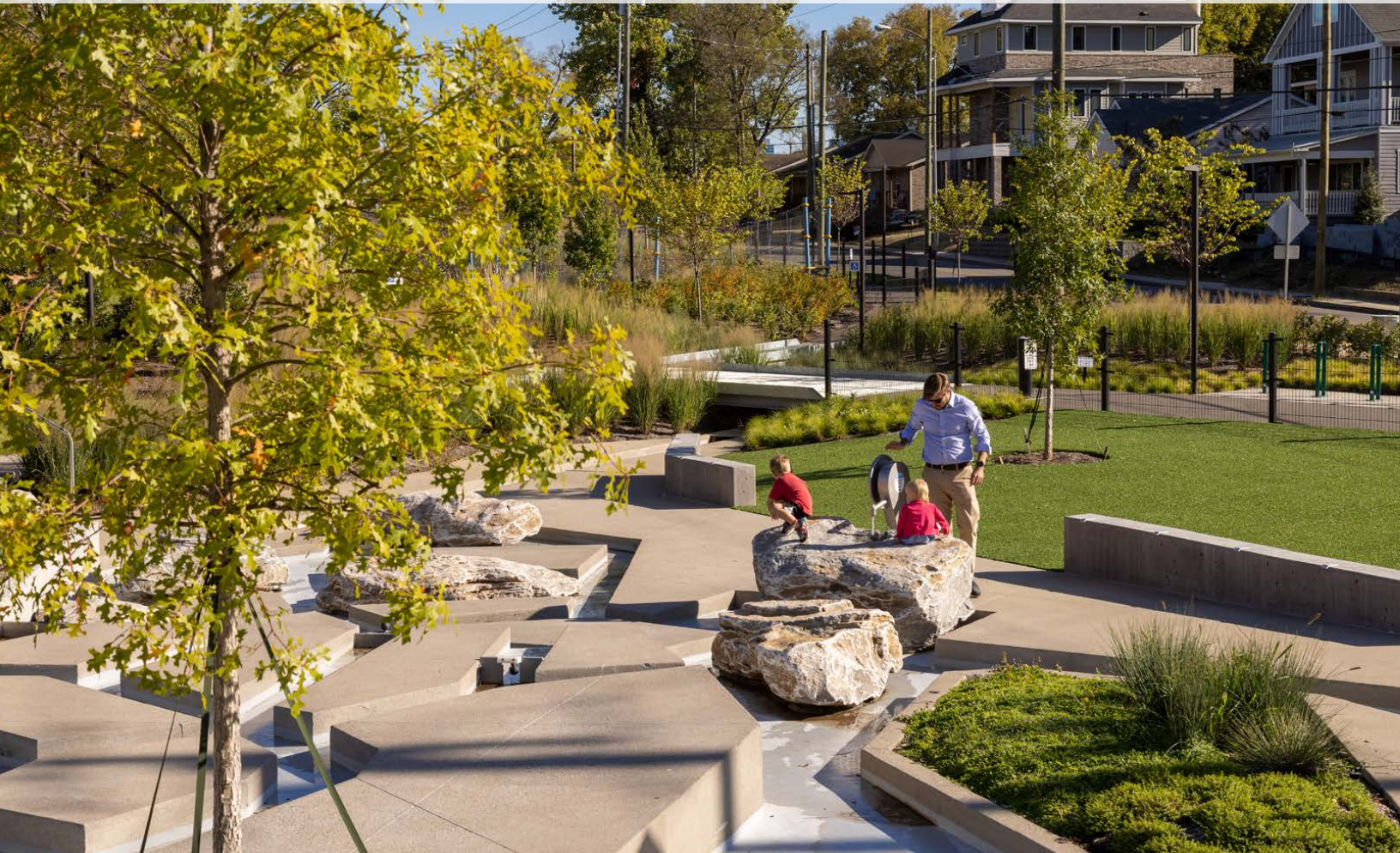
## PROJECT DESCRIPTION

Overlooking a semi-public recreation space, the 1.3-acre site was parceled off from a larger tract that has been in the client's family for generations. The wife grew up on the property and her father and aunt reside on contiguous parcels. On the high side of the site, an entrance drive follows what was once a dirt jeep trail with a redbud allée long since removed. The topography slopes steadily over a 30' grade change to the opposite property line. A historical brick building and remnants of a formal garden with a marble arbor are in full view of the clients' newly built home. Heavy handed construction clearing left a disturbed and sparsely vegetated site disconnected from the native ecology. Water seeping out of the ground caused erosion issues near the home's entrance, and the concerned owners were searching for a solution.

Previous consultants suggested a faux creek bed or rocked swale to mask the problem, but these solutions didn't align with the owners' interest in natural systems. The landscape architect was then consulted and recommended working with the wet conditions to create a unique environment for moisture loving plants, an approach that resonated with the owners. They expanded the design scope to encompass the entire property with a goal of creating an ecologically diverse garden with family friendly outdoor spaces connected by a network of paths.

# PROFESSIONAL AWARDS **General Design - Merit Award**

## **Metro Water Services 3rd Avenue Park Nashville, TN** *HDLA*



### **PROJECT DESCRIPTION**

The Nashville Metro Water Services (MWS) 3rd Avenue Park services a unique playspace within the surrounding neighborhoods and the greater Nashville area. This innovative park services as a much-needed space for water and adventure play as well as a Low Impact Development (LID) Demonstration Park. The park features adventure play elements, boulders, troughs and play elements such as dams and switches allow users to interpret their own paths for the water to flow and are surrounded by a natural play area and extensive native plantings. The park is designed to interface directly with the public and serve as an educational tool for private developers within the region. The 3rd Avenue Park project includes a new multi-use path themed around the concepts of Ecology, Play, and Education.

# PROFESSIONAL AWARDS **General Design - Merit Award**

## **Fifth Third Center Plaza Revitalization Nashville, TN** *Gresham Smith*



### **PROJECT DESCRIPTION**

Located at the corner of Church Street and Fifth Avenue in downtown Nashville, the Fifth Third Center Plaza connects the city's arts and business districts. Gresham Smith was engaged to revitalize the Plaza to elevate tenant experience, provide added value to the building's owner and engage the community while embracing Nashville's unique rhythm.

Standing in the shadow of the austere architecture of its namesake, the Plaza has existed as a stark, uninviting space that often missed its immense potential. Following community studies, extensive stakeholder meetings and conceptual development, the new design breathes life into the Plaza by inviting users to enjoy a variety of gathering spaces, lush and sustainable plantings, warm textures, intimate lighting and a pop-up retail element.

As building owners seek to maintain and attract tenants in a post-pandemic world, revitalizing unique tenant amenities that support vital collaboration and investing in the built environment are keys to the economic resiliency strategy driven by landscape architects. The refreshed Plaza demonstrates the value of landscape architecture in activating spaces to their full potential.

# PROFESSIONAL AWARDS General Design - Merit Award

## Southall – Farm, Village and Inn Franklin, TN CSDG

### Nurturing the Land

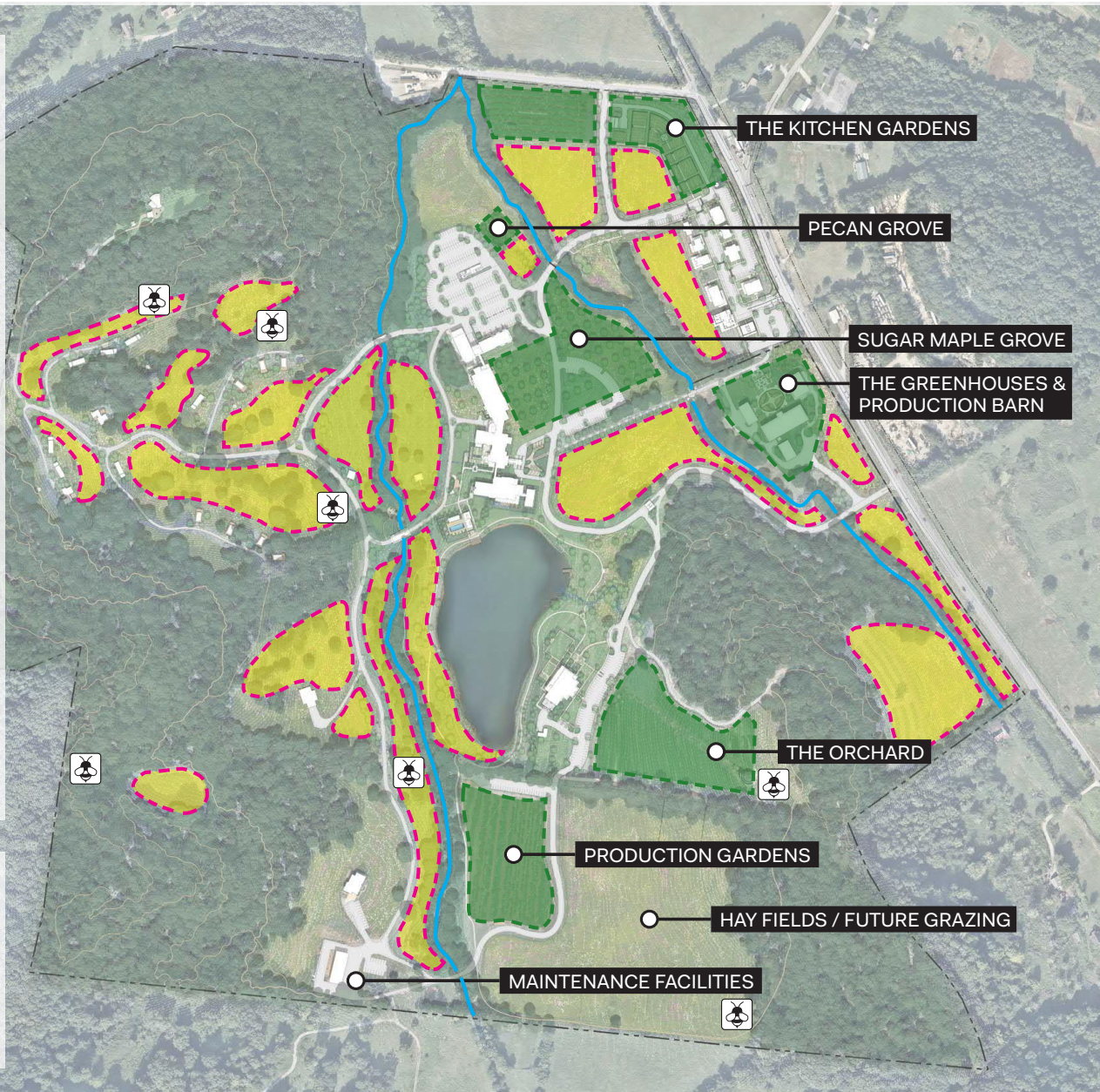
At Southall, the vision and design started with the land. A land that suffered for many years through the effects of extreme weather cycles, made worse by overgrazing and poor farming practices has transformed into a farm rich in diversity and native prairies reminiscent of what once covered the region. Existing tree canopies were preserved and acres of native meadows were implemented to allow the land to begin to heal and function as nature intended.

Interesting facts about Southall:

- 30+ acres of native seed implementation & growing
- 40+ vegetable types planted on 2+ acres of fields
- Hydroponic greenhouses produce several hundred pounds of lettuce per week
- 43 apple varieties in orchard
- Home to over 4 million bees

### Legend

-  Agricultural Components
-  Native Prairies & Meadows
-  Apiaries

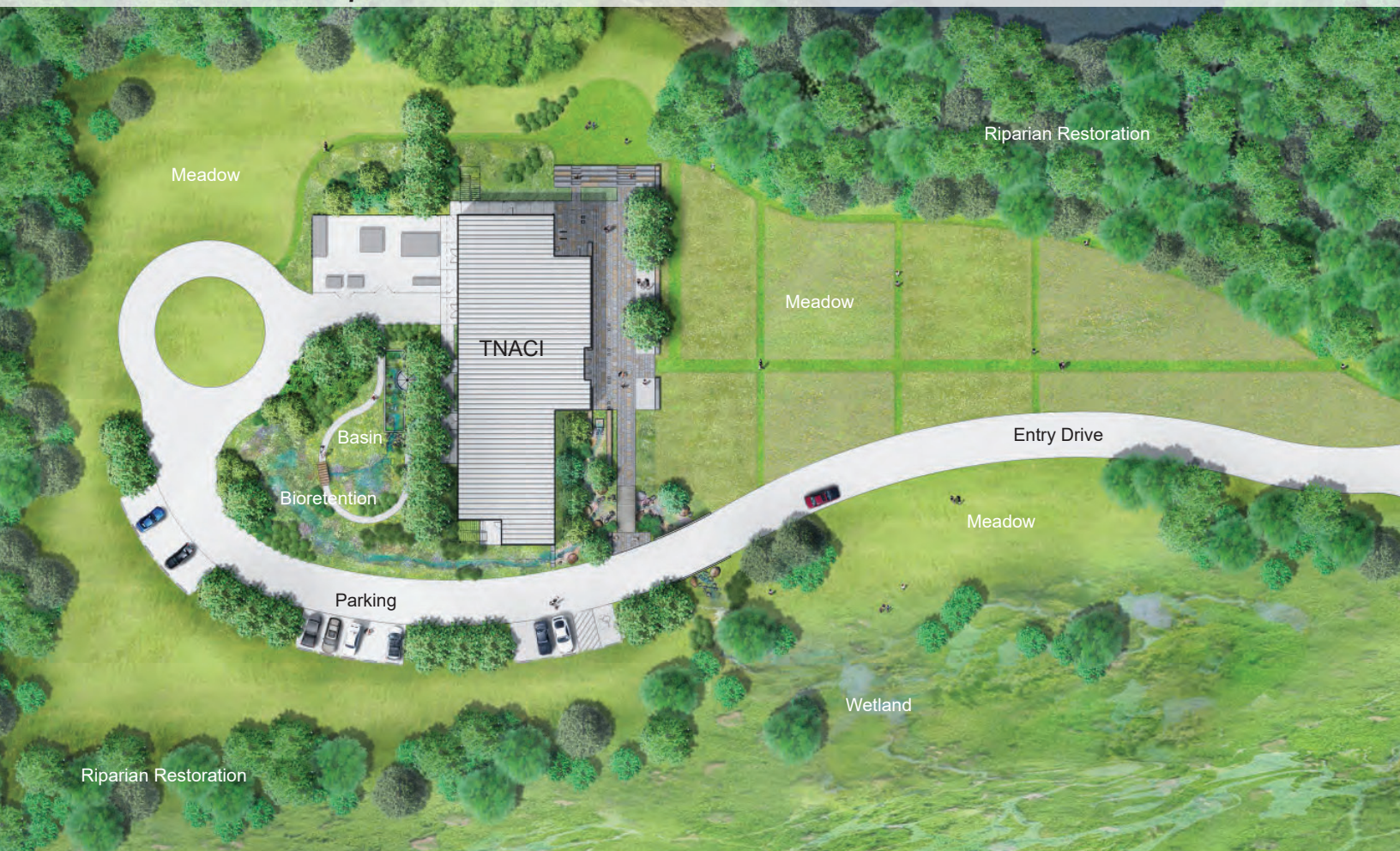


## PROJECT DESCRIPTION

Nestled in the rolling hills outside Historic Franklin, Tennessee, 25 miles south of Nashville, a 325-acre farm is being transformed into a world-class destination dedicated to nature, sustainability and the circle of life. At Southall, history will meet innovation, the earth will feed the kitchen, and the experience will nurture the soul. Dining and spa experiences honor the cycles of nature and incorporate its bounty. Through thoughtful site and architectural design, Southall exemplifies the notion that luxury hospitality can combine agriculture, culinary arts, and native, sustainable landscapes. This is Southall, an extraordinary resort where experiences are meant to be savored.



## Tennessee Aquarium Conservation Institute Chattanooga, TN *WMWA Landscape Architects*

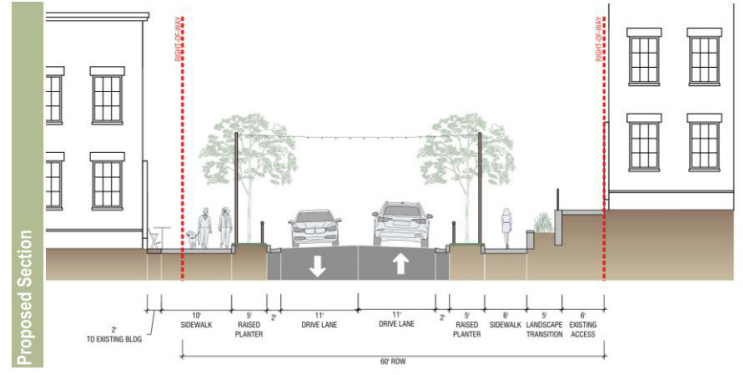
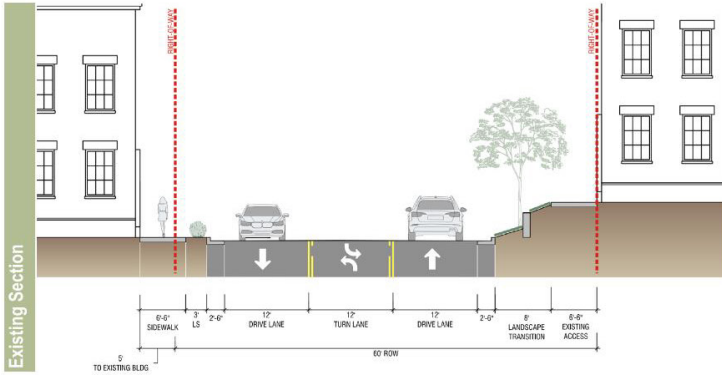


### PROJECT DESCRIPTION

This project highlights sustainable stormwater management and habitat restoration principles that reflect the endemic biological, ecological, and physiographical typologies of the adjacent Tennessee River. Through thoughtful exploration and open collaboration, TNACI offers a regional precedent that showcases novel design approaches to clients, developers, designers, and regulatory authorities. From the outset of the project, the design team set a design benchmark to replace all “grey” stormwater infrastructure with more sustainable “green” methods. A major tool established during the design process was an extensive native plant palette derived from two regional vascular flora surveys. With over 70 species of native plants, the landscape surrounding TNACI artfully integrates native materials with green stormwater infrastructure systems that capture 100% of the stormwater that falls on site. To measure the efficacy of the design, quantifiable metrics for monitoring and evaluating building and site performance were established. The landscape design at TNACI is the result of a rigorous process that elevates the role of thoughtful stormwater management and celebrates the regional beauty and ecological heritage of the Tennessee River Valley.

# PROFESSIONAL AWARDS Analysis & Planning - Merit Award

## West Jackson Street Master Plan Ridgeland, MS Kimley-Horn



## PROJECT DESCRIPTION

The Master Plan aims to enhance the existing character of the West Jackson Street corridor. The plan includes improvements within the right-of-way and City-owned property to create a cohesive, contemporary-traditional aesthetic that further strengthens the identity of Ridgeland's growing downtown. A key component throughout the plan is the implementation of traffic calming measures to foster a safe, pedestrian-oriented streetscape environment. The Plan seeks to enhance the pedestrian experience, while striking a balance with vehicular traffic, to further activate the corridor and promote economic development. The design and recommendations in the Master Plan were developed based on interactions of stakeholder input sessions and City staff feedback. The design effort was Landscape Architect led, but also included traffic planners and roadway engineers working together to ensure a feasible, safe, aesthetic, and pedestrian-focused streetscape Master Plan. Through intentional landscape and material design guidelines, this plan will develop a unique, contemporary, yet, historic design character that will carry throughout the limits of the Master Plan, creating an authentic sense of place and arrival at all edges.

## Sumner County Parks Master Plan Sumner County, TN CSDG

### ECOLOGICAL FRAMEWORK

Sumner County is made up of 3 ecoregions:

(71e) The Western Pennyrayl Karst is a flatter area of irregular plains, with fewer perennial streams, compared to the open hills of the Western Highland Rim (71f). Small sinkholes and depressions are common. The productive soils of this notable agricultural area are formed mostly from a thin loess mantle over residuum of Mississippian-age limestones. Most of the region is cultivated or in pasture; tobacco and livestock are the principal agricultural products, with some corn, soybeans, and small grains. The natural vegetation consisted of oak-hickory forest with mosaics of bluestem prairie. The barrens of Kentucky that extended south into Stewart, Montgomery, and Robertson counties, were once some of the largest natural grasslands in Tennessee.

(71g) The Eastern Highland Rim has more level terrain than the Western Highland Rim (71f), with landforms characterized as tablelands of moderate relief and irregular plains. Mississippian-age limestone, chert, shale, and dolomite predominate, and karst terrain sinkholes and depressions are especially noticeable between Sparta and McMinnville. Numerous springs and spring-associated fish fauna also typify the region. Natural vegetation for the region is transitional between the oak-hickory type to the west and the mixed mesophytic forests of the Appalachian ecoregions (68, 69) to the east. Bottomland hardwoods forests were once abundant in some areas, although much of the original bottomland forest has been inundated by several large impoundments. Barrens and former prairie areas are now mostly oak thickets or pasture and cropland.

(71h) The Outer Nashville Basin is a more heterogeneous region than the Inner Nashville Basin (71i), with more rolling and hilly topography and slightly higher elevations. The region encompasses most all of the outer areas of the generally non-cherty Ordovician limestone bedrock. The higher hills and knobs are capped by the more cherty Mississippian-age formations, and some Devonian-age Chattanooga shale, remnants of the Highland Rim. The region's limestone rocks and soils are high in phosphorus, and commercial phosphate is mined. Deciduous forest with pasture and cropland are the dominant land covers. Streams are low to moderate gradient, with productive, nutrient-rich waters, resulting in algae, rooted vegetation, and occasionally high densities of fish. The Nashville Basin as a whole has a distinctive fish fauna, notable for fish that avoid the region, as well as those that are present.

#### VEGETATION



#### HYDROLOGY



#### INFRASTRUCTURE

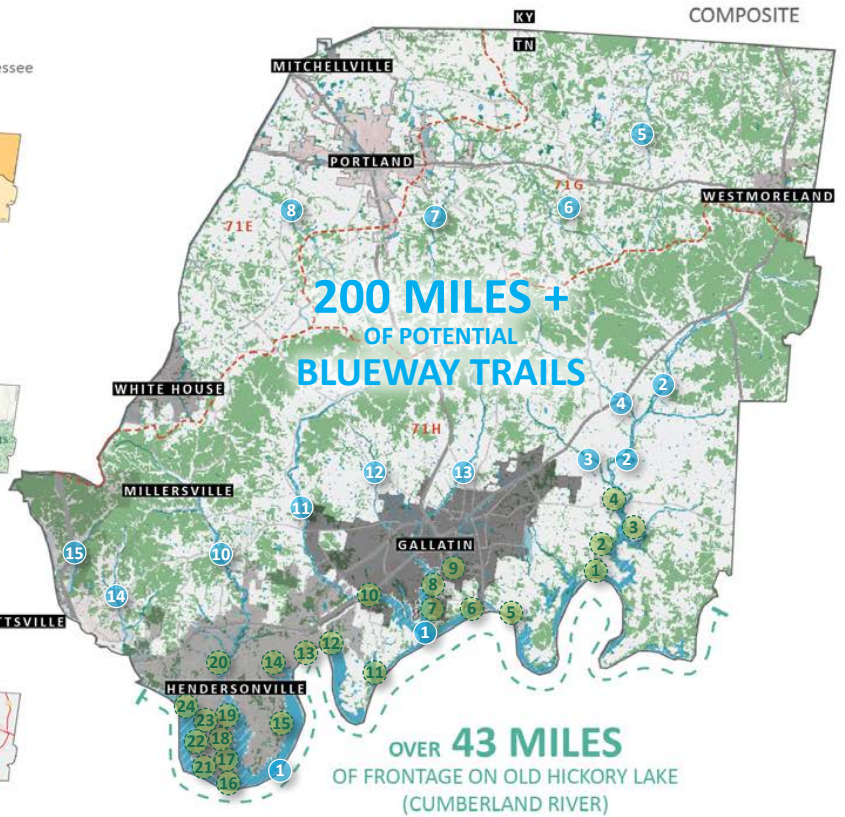


\*USGS Ecoregions of Tennessee

#### ECOREGIONS



#### TOPOGRAPHY



#### RIVERS | STREAMS | TRIBUTARIES

1. Cumberland River / Old Hickory Lake
2. Bledsoe Creek
3. Deshae Creek
5. Middle Fork Drakes Creek
6. Caney Fork Creek
7. West Fork Drakes Creek

#### BOAT RAMPS | ACCESS | MARINAS

1. North Cairo Boat Ramp
2. Bledsoe Creek State Park
3. Shady Cove Resort Marina
5. Bull Creek Boat Ramp
6. Woods Ferry Rd. Boat Ramp
7. Lock 4 Boat Ramp
10. Station Camp Creek Access
11. Cages Bend Boat Ramp
12. Avondale Access Area
15. Stark Knob Boat Ramp
16. Sanders Ferry Park Boat Ramp
17. Drakes Creek Marina
20. Sanders Ferry Rd. Boat Ramp
21. Walton Ferry Access Area
22. Lock 3 Boat Ramp

## PROJECT DESCRIPTION

The purpose of the Sumner County Parks Master Plan was to create a plan in response to current and future County parks, open space and connectivity needs. Based on public and civic input, the proposed 5-10 year growth and monitoring plan focuses on short-term, mid-term and long-term goals, and is intended to align with the needs and priorities of the community. The efforts culminated in November 2020 with a County Commission approved 125 page Master Plan document, a TDEC Grant for the William and Martha Brown Memorial Park, and the formation of Sumner County's first Parks and Recreation Board.

**Fort Negley Master Plan Nashville, TN**  
*HDLA*



**PROJECT DESCRIPTION**

The Master Plan for the Fort Negley Park and historical site focuses on the creation of an open-air museum of national significance that speaks through the cultural landscape to reveal history from the civil war to civil rights. Fort Negley Park sits at the nexus of Nashville’s collective memory, a living history of the city’s physical, economic, and cultural evolution. Its story is uniquely American and within its landscape lies the narrative of our nation’s turbulent past. Fort Negley’s most recent history remains a microcosm of contemporary forces, the center of a push pull relationship between development, open space, and the telling of accurate and truthful history. Any successful master planning effort for Fort Negley requires the site, as well any proposed improvements, be viewed through this holistic lens. Fort Negley is much more than a Civil War relic. It represents the hope of freedom, the injustice of enslavement, the still felt effects of urban renewal, and a continued struggle for social and environmental equity within a rapidly changing urban environment.

The master plan recognizes the complexity of the site and its historical and cultural importance. At their foundation, the plan’s recommended site improvements, program elements and strategic solutions represent an effort to interpret the site in ways that reflect this importance and illuminate Fort Negley’s story with truth and beauty.

# FREDERICK LAW OLMSTED AWARD

## **Ward Archer** Founder and President *Protect Our Aquifer*

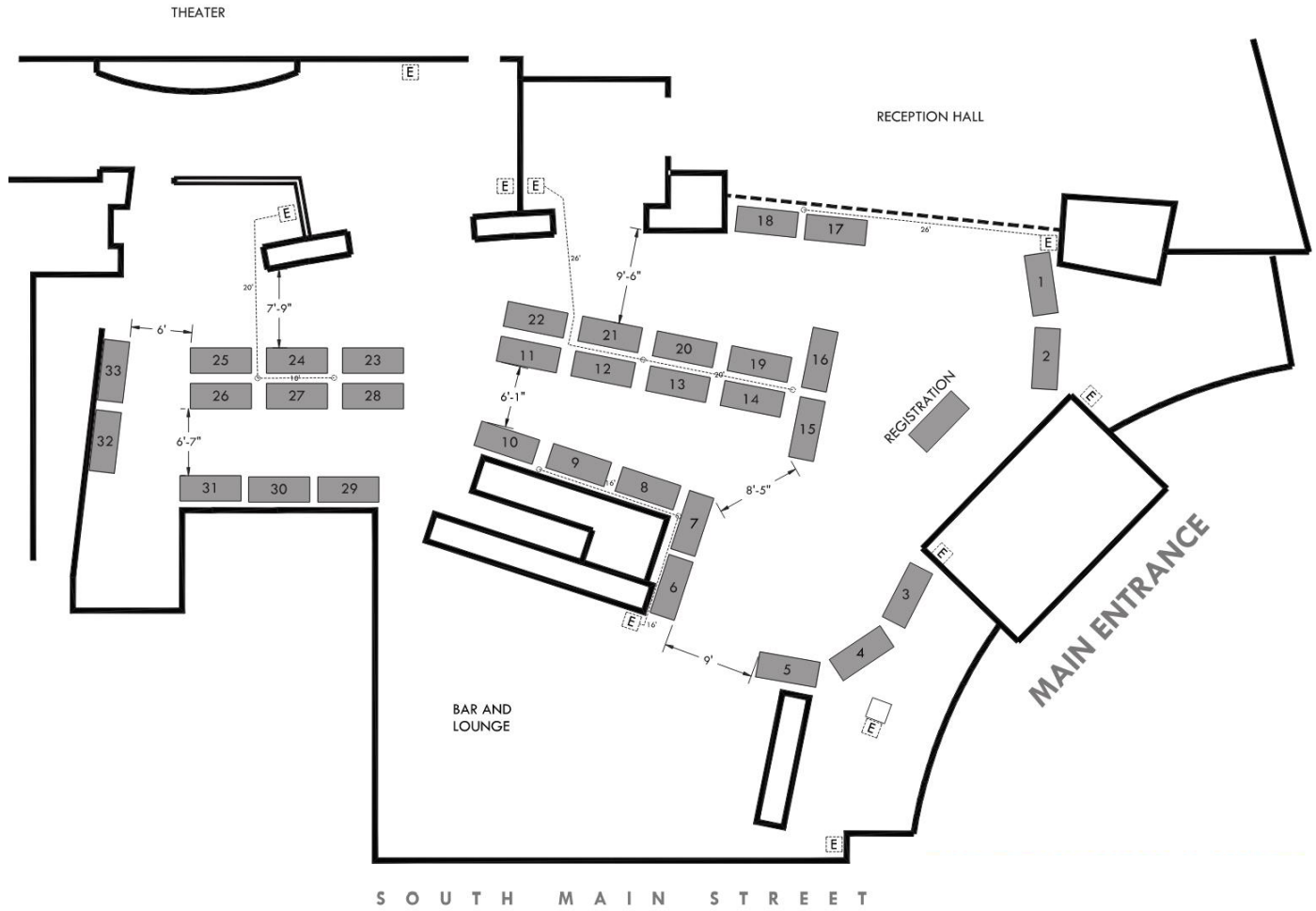
In 2002, Ward Archer became interested in the Memphis Sand Aquifer after working on a fundraising effort to save the headwaters of the Wolf River from being clear-cut by a logging company. While touring the headwaters, Archer learned that the Memphis Sand appears at the surface there and serves a recharge source for the pristine water enjoyed in Memphis. Fascinated with the idea of 1,000 feet of water being below Memphis, Archer researched the aquifer for over a year and wrote an article, *Liquid Assets*, which was published in 2005. When the Sierra Club sounded the alarm of TVA's plan to tap the aquifer for cooling water in 2016, Archer was among the first to protest and eventually started the citizen's group *Protect Our Aquifer*, which is still fighting TVA's plans, working to reform the Shelby County Groundwater Ordinance and developing a long-range plan to protect the Memphis Sand Aquifer.



Ward serves on the CAESER (Center for Applied Earth Science and Engineering Research) Advisory Board at the University of Memphis and served as a member of Governor Haslam's Tennessee H2O task force. He is the former CEO of the advertising firm Archer Malmo and is president of the board of Memphis magazine.

*Ward is being presented with this year's Frederick Law Olmsted Award for his significant contributions to the State of Tennessee through the preservation of its landscape and enhancement of its physical environment.*

# EXHIBITION HALL LAYOUT



Booth #	Title Sponsor	Booth #	Silver Sponsor	Booth #	Conference-Only Sponsor
1 & 2	Belgard	8	Goat Turf	10	PPG
<b>Booth #</b>	<b>Platinum Sponsor</b>	9	Anova	12	Vortex
6	TN Concrete Assoc.	11	Victor Stanley	20	Most Dependable Fountains
7	Recreational Concepts	13	Techo-Bloc	24	Keystone Hardscapes
15	SiteOne	14	Tournesol Siteworks	25	Sod Solutions
16	Firefly Recreation	17	Unilock	26	Whitacre Greer
<b>Booth #</b>	<b>Gold Sponsor</b>	18	Landscape Forms	27	Holly Consults
3	Cunningham Recreation	19	Site Innovations Group	28	Kompan
4	Hanover	21	Wausau Tile	30	Rain Bird
5	Mid-South Recreation	22	ASL Stone	31	Roundstone Native Seed
		23	Madrax/Thomas-Steele	32	TN Stormwater Association
		29	IRONSMITH		
		33	Clear Advantage Lighting		



## TITLE SPONSOR



# BELGARD®

## PLATINUM SPONSORS



## GOLD SPONSORS



## SILVER SPONSORS



# CONFERENCE-ONLY SPONSORS





Printing of program and other materials for  
this year's conference courtesy of:



**ASLA**  
TENNESSEE